



Komodo is a world leading brand in reptile and amphibian care products. Based in the UK, Komodo has built its reputation on delivering responsible reptile care, with an ever expanding range of ethical, well researched products for reptile keepers at all levels, from novices and hobbyists to breeders and professional herpetologists.

Komodo Jungle Canopy

The Artificial Jungle Canopy decor plant is ideal for creating a realistic reptile habitat providing an ideal hiding place for reptiles & live food. The two-tiered foliage with flexible stems to shape as required, comes complete with a weighted base to keep the plant upright.

The approximate height for the Jungle Canopy is 42cm/16.5".

Here is a list of some of the popular species that love the Jungle Canopy;

- Tortoises
- Corn Snakes
- Royal Python
- Geckos



Jungle Canopy Features



Weighted Base

The Jungle Canopy has a fantastic weighted base, so it can be embedded securely within your reptiles habitat.

The weighted base will prevent slipping or the plant from moving around.

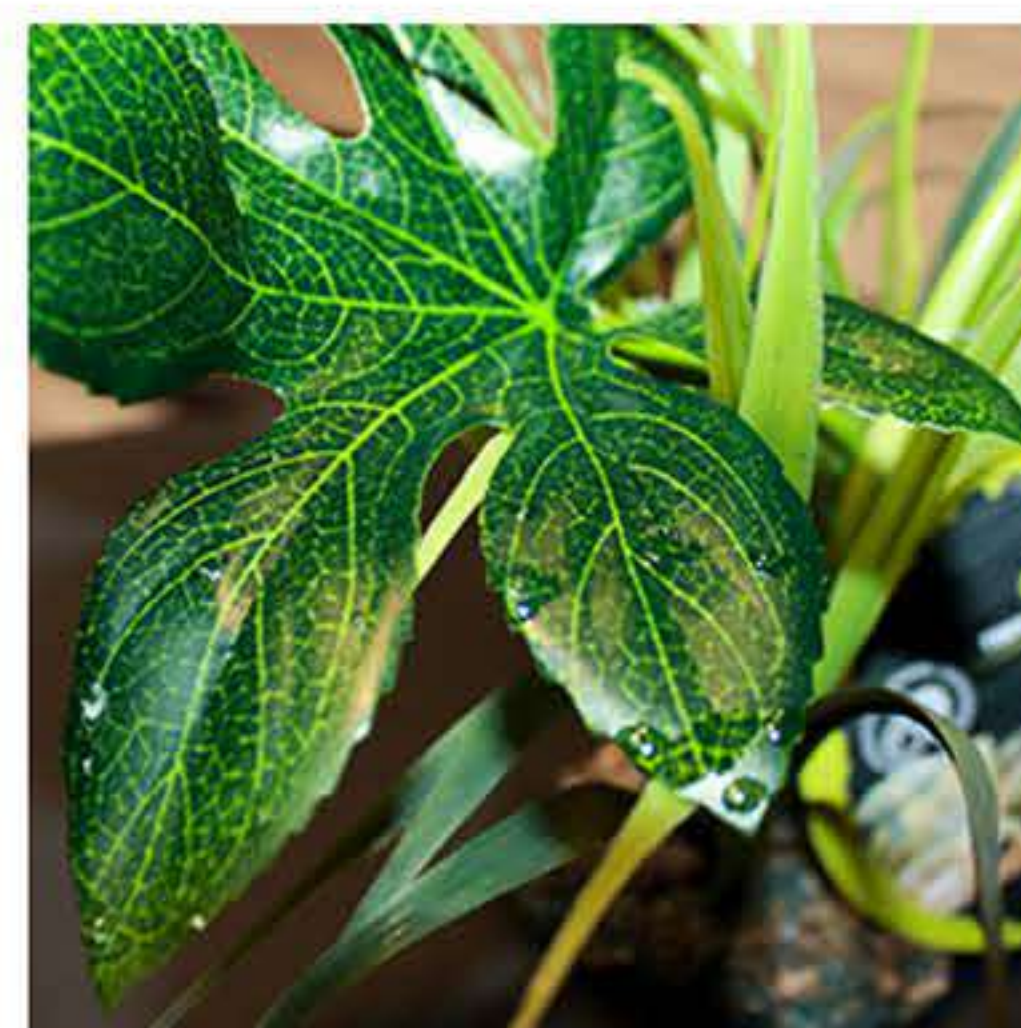


Dried Water Droplets

The dried water droplets are great for creating that ultimate natural look.

The droplets help to bring life to the artificial plant giving that realistic look within your reptiles habitat.

You could spray the leaves to give the plant a more realistic approach.



Mixture of Leaf & Stems

The mixture of leaf and stem within the Jungle Canopy helps to give your reptile and live food a hideout place or simply a place to rest.

The plant also gives your reptile the freedom to move around their habitat without getting caught between the plant.



Easy to Clean

This artificial Jungle Canopy is great for maintaining the cleanliness.

You will be able to wipe down with a damp cloth or rinse under a tap from time to time.



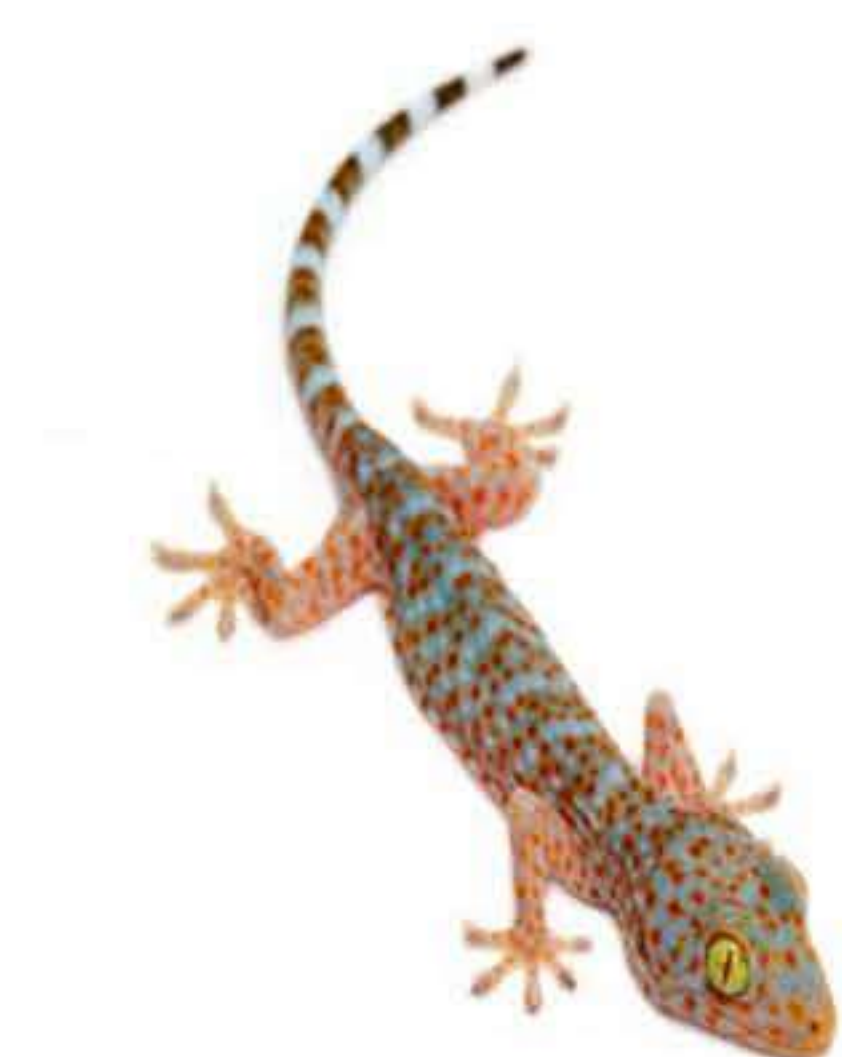
Suitable for Reptiles

The plant is safe and gentle for any terrarium or vivarium, and the natural look and feel will make your reptile feel at home.



Realistic Reptile Environment

The Jungle Canopy will really help to develop and make a feature of your reptiles home. While your reptile's environmental needs always come first, the Jungle Canopy will help to fulfil.



Gecko Facts

- Geckos come in a wide range of sizes.
- Most Geckos are awake at night and sleep during the day
- Geckos give birth by laying eggs. The female can be pregnant with her eggs for years before she lays them
- Geckos have sticky feet that allows them to climb up slick surfaces.



Tortoise



Corn Snake



Royal Python



Gecko